



Food and Agriculture  
Organization of the  
United Nations



International  
Plant Protection  
Convention

DEC  
2024

ENG

# Field survey guidance for *Fusarium oxysporum* f. sp. *cubense* Tropical Race 4



# Field survey guidance for *Fusarium oxysporum* f. sp. *cubense* Tropical Race 4

**Required citation:**

IPPC Secretariat. 2024. Field survey guidance for *Fusarium oxysporum* f. sp. *ubense* Tropical Race 4. Rome, FAO on behalf of the Secretariat of the International Plant Protection Convention. DOI . <https://doi.org/>

---

The designations employed and the presentation of material in this information product do not imply the expression of any opinion whatsoever on the part of the Food and Agriculture Organization of the United Nations (FAO) concerning the legal or development status of any country, territory, city or area or of its authorities, or concerning the delimitation of its frontiers or boundaries. The mention of specific companies or products of manufacturers, whether or not these have been patented, does not imply that these have been endorsed or recommended by FAO in preference to others of a similar nature that are not mentioned.

The views expressed in this information product are those of the author(s) and do not necessarily reflect the views or policies of FAO.

ISBN \_\_\_\_\_  
© FAO, 2024



Some rights reserved. This work is made available under the Creative Commons Attribution- 4.0 International licence (CC BY 4.0: <https://creativecommons.org/licenses/by/4.0/legalcode.en>).

Under the terms of this licence, this work may be copied, redistributed and adapted, provided that the work is appropriately cited. In any use of this work, there should be no suggestion that FAO endorses any specific organization, products or services. The use of the FAO logo is not permitted. If a translation or adaptation of this work is created, it must include the following disclaimer along with the required citation: “This translation [or adaptation] was not created by the Food and Agriculture Organization of the United Nations (FAO). FAO is not responsible for the content or accuracy of this translation [or adaptation]. The original [Language] edition shall be the authoritative edition.”

Any dispute arising under this licence that cannot be settled amicably shall be referred to arbitration in accordance with the Arbitration Rules of the United Nations Commission on International Trade Law (UNCITRAL). The parties shall be bound by any arbitration award rendered as a result of such arbitration as the final adjudication of such a dispute.

**Third-party materials.** This Creative Commons licence CC BY 4.0 does not apply to non-FAO copyright materials included in this publication. Users wishing to reuse material from this work that is attributed to a third party, such as tables, figures or images, are responsible for determining whether permission is needed for that reuse and for obtaining permission from the copyright holder. The risk of claims resulting from infringement of any third-party-owned component in the work rests solely with the user.

**FAO photographs.** FAO photographs that may appear in this work are not subject to the above-mentioned Creative Commons licence. Queries for the use of any FAO photographs should be submitted to: [photo-library@fao.org](mailto:photo-library@fao.org).

**Sales, rights and licensing.** FAO information products are available on the FAO website ([www.fao.org/publications](http://www.fao.org/publications)) and print copies can be purchased through the distributors listed there. For general enquiries about FAO publications please contact: [publications@fao.org](mailto:publications@fao.org). Queries regarding rights and licensing of publications should be submitted to: [copyright@fao.org](mailto:copyright@fao.org).

# Contents

Introduction.....	v
Acknowledgements.....	vii
Abbreviations .....	vii
Scientific name .....	1
Common name.....	1
Type of pest .....	1
Taxonomic position .....	1
<b>Known hosts.....</b>	<b>1</b>
<b>Preferred hosts.....</b>	<b>1</b>
<b>Survey protocol .....</b>	<b>2</b>
<b>Survey site selection .....</b>	<b>2</b>
<b>Time of year to survey .....</b>	<b>2</b>
<b>Visual survey .....</b>	<b>2</b>
<b>Signs and symptoms.....</b>	<b>2</b>
<b>Associated organism .....</b>	<b>4</b>
<b>Sample collection .....</b>	<b>4</b>
<b>Pest identification and diagnostics .....</b>	<b>4</b>
<b>Pest description .....</b>	<b>4</b>
<b>Identification and diagnostic resources .....</b>	<b>5</b>
<b>Mistaken identities .....</b>	<b>5</b>
<b>Figures</b>	
Figure 1. Adult banana plant infected with FOC TR4 exhibiting leaf yellowing and wilt.....	1
Figure 2. Early stage of FOC TR4 infection – leaf yellowing and edges turn brown .....	2
Figure 3. Various stages of internal discoloration in banana pseudostems as a result of FOC TR4 .....	3
Figure 4. Advanced stage of FOC TR4 infection.....	3
Figure 5. Adult banana weevil, <i>Cosmopolites sordidus</i> (Germar).....	5



# Introduction

Consistent and thorough monitoring and surveillance are essential for countries to determine the presence or absence of plant pests, particularly those that significantly affect food security, the environment, trade, and agricultural productivity. This early warning information is vital for prompt responses, making sound phytosanitary decisions, effective risk management, and safeguarding borders against pest entry and spread.

This field survey guidance therefore provides easy-to-follow guidelines for technical personnel of national plant protection organizations (NPPOs), to survey *Fusarium oxysporum* f. sp. *Cubense* Tropical Race 4 (FOC TR4). FOC TR4 is a major pest threatening global banana production since it can cause 100 percent yield loss on a farm and is challenging and costly to manage.

This document provides a protocol, with visuals, to aid in the monitoring, detection, sample collection, and diagnostics of FOC TR4, ensuring effective phytosanitary decision-making to manage the pest risk and protect trade in plants and plant products.

The field survey guidance complements the digital tools available to NPPO plant health inspectors, through the Africa Phytosanitary Programme (APP) mobile application and Geographic Information System (GIS) platforms.

APP is an initiative of the International Plant Protection Convention (IPPC) designed to transform pest management across Africa by enhancing the capabilities of phytosanitary personnel within NPPOs, to leverage advanced science and modern digital technology for effective and timely pest surveillance, detection, diagnostics, control, and prevention.

The IPPC implements APP in collaboration with the Food and Agriculture Organization of the United Nations (FAO) and the African Union Department of Agriculture, Rural Development, Blue Economy and Sustainable Development, through the African Union Inter-Africa Phytosanitary Council (AU-IAPSC).

This guide was developed with technical and financial support from the United States Department of Agriculture (USDA) Animal and Plant Health Inspection Service (APHIS).





# Acknowledgements

The IPPC Secretariat and the IPPC community are grateful to all the institutions that contributed to the production of this document. This document presents guidance to national plant protection organizations (NPPOs) to support active surveillance, detection, diagnostics, control and prevention of *Fusarium oxysporum* f. sp. *cubense* Tropical Race 4 (TR4). This survey guidance was created with financial support from the United States Department of Agriculture (USDA) Animal and Plant Health Inspection Service (APHIS). The guidance provided in this document was prepared by subject matter experts from USDA APHIS and reviewed by technical officers at the IPPC Secretariat, in the framework of the Africa Phytosanitary Programme (APP). The IPPC implements APP in collaboration with the Food and Agriculture Organization of the United Nations (FAO) and the African Union Commission on Agriculture, through its technical unit- the African Union Inter-Africa Phytosanitary Council (AU-IAPSC).

## Abbreviations

<b>APHIS</b>	Animal and Plant Health Inspection Service
<b>APP</b>	Africa Phytosanitary Programme
<b>AU-IAPSC</b>	African Union Inter-Africa Phytosanitary Council
<b>FAO</b>	Food and Agriculture Organization of the United Nations
<b>FOC TR4</b>	<i>Fusarium oxysporum</i> f. sp. <i>Cubense</i> Tropical Race 4
<b>BBTV</b>	Banana bunchy top virus
<b>GIS</b>	Geographic Information System
<b>IPPC</b>	International Plant Protection Convention
<b>NPPO</b>	National Plant Protection Organization
<b>SR4</b>	Subtropical Race 4
<b>USDA</b>	United States Department of Agriculture





Figure 1: Adult banana plant infected with FOC TR4 exhibiting leaf yellowing and wilt.

© Scot Nelson / USDA

# Field survey guidance for *Fusarium oxysporum* f. sp. *cubense* Tropical Race 4

## Scientific name

*Fusarium oxysporum* f. sp. *cubense*  
Tropical Race 4 (E.F. Sm.)  
W.C. Snyder & H.N. Hansen

## Common name

FOC TR4, Fusarium wilt of banana,  
Panama disease

## Type of pest

Fungus

## Taxonomic position

**Phylum:** Ascomycota  
**Class:** Sordariomycetes  
**Order:** Hypocreales  
**Family:** Nectriaceae

## Known Hosts

### Preferred hosts

Gros Michel banana (*Musa acuminata*),  
*M. acuminata* subsp. *burmannica* and  
*M. balbisiana*. Tropical Race 4 (E.F. Sm.)  
W.C. Snyder & H.N. Hansen

## Survey protocol

### Survey-site selection

Survey where *Musa* species occur.  
This may include commercial production sites, landscaped areas or natural areas with wild *Musa* plants.

### Time of year to survey

Year-round; however, older leaves are more likely to have symptoms of the disease. Banana suckers that are less than about four months old (often used as planting material) do not develop visible symptoms.

### Visual survey

#### Signs and symptoms

The first above-ground symptoms are pale green streaks at the bottom of the leaf petioles at the base of the oldest leaves. After this, two types of syndromes can occur:

#### YELLOW-LEAF SYNDROME

- ◆ The leaves begin to yellow, progressing from older (bottom) to younger (top) leaves, and may turn brown at the edges (Figure 2).
- ◆ The leaves gradually collapse, bend and droop, forming a skirt around the base of the plant (Figure 4).
- ◆ This process can last 1 to 3 weeks.

#### GREEN-LEAF SYNDROME

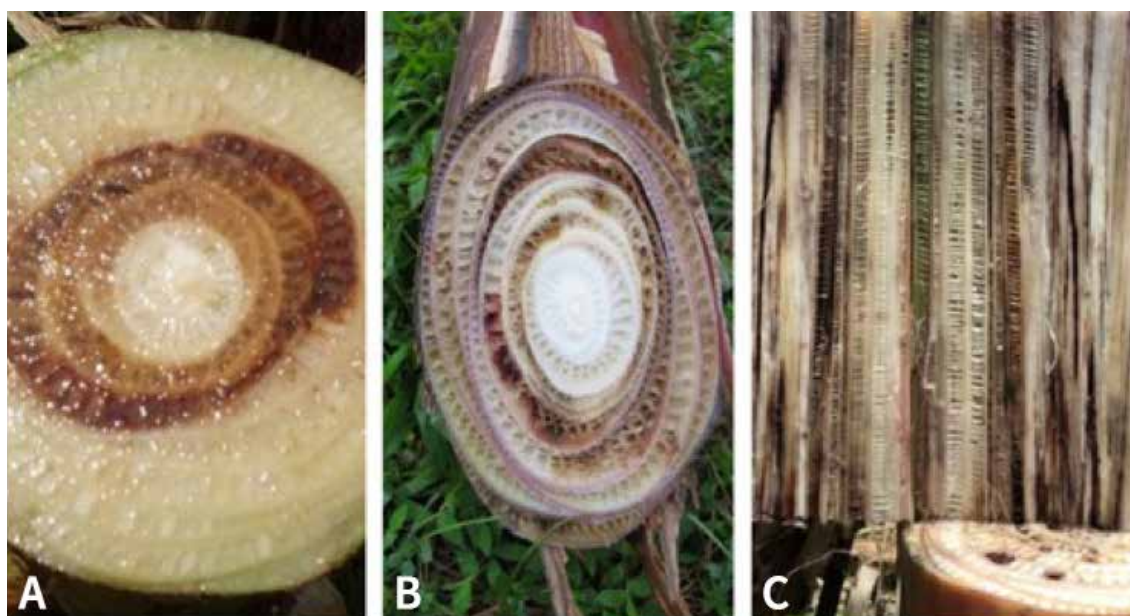
- ◆ The leaves remain mostly green until they bend and collapse; older leaves exhibit this syndrome before younger ones.

The pseudostems (the part of the banana tree that looks like a trunk) may split lengthwise and, when cut open, a reddish-brown discolouration of the vascular tissue is typically seen (Figure 3). A reddish-brown discolouration may also be seen in the roots and rhizomes. New leaves may be paler and shorter than normal. Fruits exhibit no symptoms.



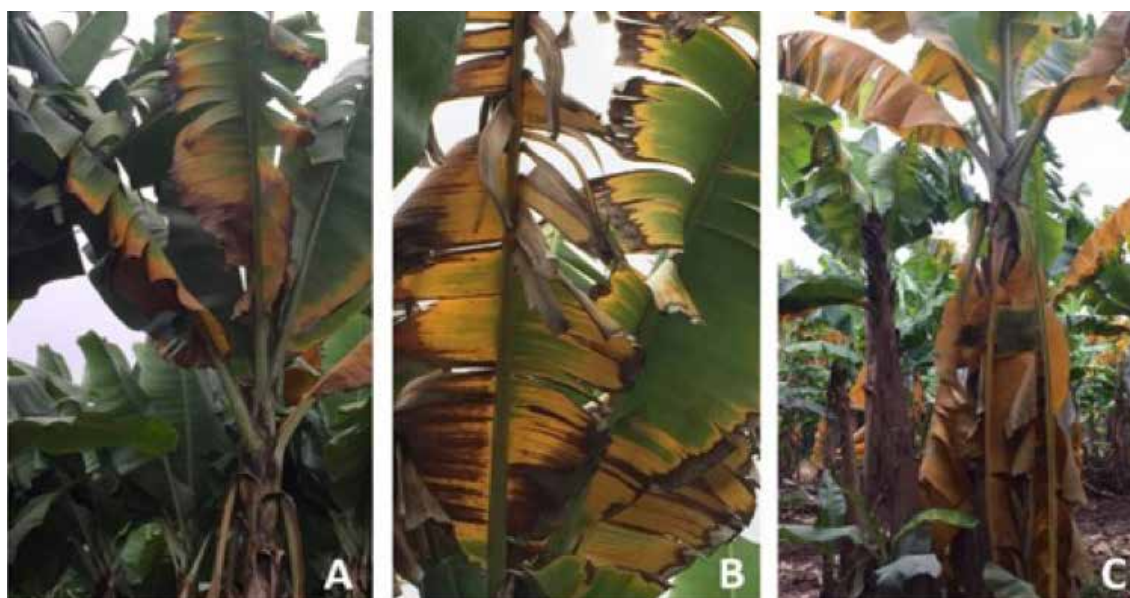
**Figure 2: Early stage of FOC TR4 infection – leaf yellowing and edges turn brown.**

© Department of Agriculture and Fisheries, Queensland, Australia; licence: CC BY 4.0



**Figure 3: Various stages of internal discoloration in banana pseudostems as a result of FOC TR4.**

© 3(a): George Mahuku/IITA, licence: CC BY-NC 4.0; 3(b): Department of Agriculture and Fisheries, Queensland, Australia; 3(c): Miguel Dita/Alliance



**Figure 4: Advanced stage of FOC TR4 infection: (a) leaves wilt and start to collapse; (b) advanced yellowing and browning of leaves; (c) dead leaves form a skirt around the stem.**

© Department of Agriculture and Fisheries, Queensland, Australia; licence: CC BY 4.0



## Associated organism

The banana weevil, *Cosmopolites sordidus* (Figure 5), is a suspected vector of this pathogen. The presence of this insect could be an indication that the pathogen may be present.

### Sample collection

Disposable gloves are recommended for sampling. If sampling multiple plants, gloves and cutting tools should be sanitized (or the gloves changed) between plants to avoid cross-contamination. Sample the pseudostem of the plant where continuous discoloured vascular areas (strands) are present. Sample as low as possible on the pseudostem (closer to the ground) but not from areas where decay is advanced. Avoid sending only the outermost leaf bases of the pseudostem. A small (5 cm × 5 cm) piece of rhizome tissue showing discoloured vascular strands can also be used, but only if decay is not advanced. Banana tissues are very wet and can degrade quickly in hot weather. Plastic bags are not recommended as they may quicken the deterioration of the sample. Place the sample in a clean, dry paper towel or newspaper in a heavy paper bag. Make sure the sample is accurately labelled for the follow-up. Keep the sample cool and dry in an ice chest, but do not freeze. If sampling between fields where FOC TR4 is suspected, remove the soil from footwear or use disposable foot covers between fields to avoid spreading the pathogen.

Pictures of symptoms from the field may also help identifiers to determine the location, the overall plant health and how the samples looked before they were removed from the host.

## Pest identification and diagnostics

### Pest description

*Fusarium oxysporum* f. sp. *cubense* (FOC) has four races, three of which affect banana. Race 4 has two subgroups: TR4 and subtropical race 4 (SR4), which infect hosts in the tropics and subtropics respectively. Cold-stressed banana plants grown in subtropical regions are predisposed to SR4 outbreaks, whereas TR4 is an aggressive strain that can infect banana plants that are healthy or unstressed.

*F. oxysporum* f. sp. *cubense* TR4 is a soil-borne pathogen that is found within the vascular tissues of host plants. The pathogen can survive in plant residue and can persist in soil for up to 40 years. The fungus is commonly spread through infected planting material, infested soil and water, or possibly through the banana weevil. Infected banana plants can also transmit the pathogen via underground rhizome growth to new banana plants. The total process, from the initial external symptoms on a plant to collapse and death, can take 3 to 6 weeks.

*F. oxysporum* f. sp. *cubense* TR4 is like other FOC races and produces three types of asexual conidia that can only be seen with a microscope. Microconidia (5 µm to 7 µm × 2.5 µm to 3 µm) are oval or kidney-shaped spores that can be produced under any conditions and are the most produced spore within infected plants. Macroconidia (22 µm to 36 µm × 4 µm to 5 µm) are larger, thin-walled spores, most frequently produced on the surface of infected plants. The third group, chlamydospores (9 µm × 7 µm) are round, thick-walled spores that are produced in macroconidia or are intercalary or terminal in older hyphae.



**Figure 5: Adult banana weevil, *Cosmopolites sordidus* (Germar).**

© G. McCormack, Cook Islands Biodiversity Database

### Identification and diagnostic resources

The different races of FOC cannot be distinguished by symptoms alone and therefore laboratory techniques are needed for identification. The recommended molecular method to screen for FOC TR4 is polymerase chain reaction (PCR) using the W2987-F and W2987-R primers that amplify DNA specific to FOC TR4.

### Mistaken identities

Besides the other races of *Fusarium oxysporum* f. sp. *cubense* that affect banana, the fungus causes symptoms that may also be confused with other bacterial diseases of banana such as banana xanthomonas wilt (*Xanthomonas campestris* pv. *musacearum*), moko disease of banana (*Ralstonia solanacearum* race 2) and blood disease of banana (*Ralstonia syzigii* subsp. *celebesensis*). However, these pathogens cause symptoms on fruit (which FOC does not) and can have noticeable bacterial ooze from freshly cut pseudostems (which FOC would not). FOC TR4 symptoms may also be confused with other biotic and abiotic factors, including water stress. Care should be taken to examine the plant for other external and internal symptoms.

## IPPC

The International Plant Protection Convention (IPPC) is an international plant-health agreement that aims to protect global plant resources and facilitate safe trade. The IPPC vision is that all countries have the capacity to implement harmonized measures to prevent pest introductions and spread, and minimize the impacts of pests on food security, trade, economic growth, and the environment.

## Organization

- » There are over 180 IPPC contracting parties.
- » Each contracting party has a national plant protection organization (NPPO) and an official IPPC contact point.
- » Ten regional plant protection organizations have been established to coordinate NPPOs in various regions of the world.
- » The IPPC Secretariat liaises with relevant international organizations to help build regional and national capacities.
- » The secretariat is provided by the Food and Agriculture Organization of the United Nations (FAO).

International Plant Protection Convention Secretariat  
[ippc@fao.org](mailto:ippc@fao.org) | [www.ippc.int](http://www.ippc.int)

**Food and Agriculture Organization of the United Nations**  
Rome, Italy

ISBN placeholder